

LabMaster-aw neo

Water Activity Measurement

THE talented all-rounder

Top water activity measuring device with technological lead, perfect for the daily routine determination of water activity in QA laboratories of food and pharmaceutical companies. This measuring instrument also provides support in the investigation of the causes of product spoilage, texture changes or rancidity.

Outstanding measuring instrument for effortless and worry-free water activity measurement and documentation, including 21CFR11 compliant audit trail and user management, automatic verification or adjustment, contactless salt standard identification by RFID and a fast mode that guarantees results within 10 minutes. Additional features such as full thermostatisation in the range of 0-60°C, measuring range from 0.0300-1.000aw and a simpler protective filter handling by magnet fixing complete the LabMaster-aw neo. Of course also conformable with AOAC, ISO, USP and other standards/standards



Meter Specifications

	LabMaster-aw neo
Operating conditions	<ul style="list-style-type: none"> > Relative humidity: 5... 95%rH, non condensing > Temperature: 5...45°C > Altitude: up to 2000 meters above sea level (m.a.s.l.) according to EN 61010-1
Power supply	<ul style="list-style-type: none"> > 100... 260 VAC > Power consumption: <ul style="list-style-type: none"> > Maximum: 42W > Normal operation: < 15W > Stand-By: < 0.1W
Display	7" capacitive Touchscreen
Communication	<ul style="list-style-type: none"> > RS-232 and USB 2.0 for PC > RS-232 for printer Epson TM-U220D > SD card
Housing	<ul style="list-style-type: none"> > Hybrid of painted steel housing and PUR > Weight: approx. 10kg > Dimensions (LxWxH)= 423x260x186mm Height with open ceiling: 462mm
Measuring chamber volume	12mL
Dimensions sample cups	diameter 40mm x Höhe 13mm
Protection class	IP20
21CFR 11	<ul style="list-style-type: none"> > 21CFR11 compliant Audit Trail > 21CFR11 compliant user management

Measurement Specifications

	parameter	
	Water activity	Temperature
Measuring principle	Electrolytic	Surface infrared sensor
Measuring range	0.0300...1.0000aw*	5...45°C (41...113°F)
Adjustment range	0.0400...1.0000aw*	N/A
Resolution	0.0001aw	0.01°C
Accuracy	+/-0.0030aw within the adjustment range	+/-0.2°C
Precision	+/-0.0020aw within the adjustment range*	+/-0.1°C
Repeatability	+/-0.0010aw within calibration reange*	N/A
Temperature control	Programmable measuring temperature in the range of 0...60.00°C (32...140°F)	
Adjustment point (%rH)	4%, 6%, 11%, 33%, 53%, 58%, 75%, 84%, 90%, 97%, 100% Salt standards are equipped with RFID chips to ensure error-free identification by the LabMaster-aw neo.	



LabMaster-aw neo ENS



2601500 LabMaster-aw neo (ENS)

- LabMaster-aw neo with awSens-ENS
- Measuring instrument LabMaster-aw neo
- 7 x SAL-T: 11,33,58,75,84,97 and 100 % rH
- 1 x service tool
- 40 x ePW sample dishes
- USB / RS-232 interface cable
- USB stick with operating instructions
- Factory calibration certificate
- SD Memory Card 8GB
- power cable

LabMaster-aw neo ELS



2601700 LabMaster-aw neo (ELS)

- LabMaster-aw neo with awSens-ELS
- Measuring instrument LabMaster-aw neo
- 7 x SAL-T: 11,33,58,75,84,97 and 100 % rH
- 1 x service tool
- 40 x ePW sample dishes
- USB / RS-232 interface cable
- USB stick with operating instructions
- Factory calibration certificate
- SD Memory Card 8GB
- power cable

Accessories

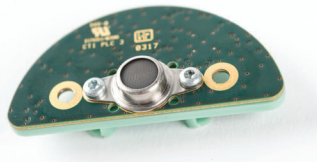


- 260 1330 -> Redox
- 260 1600 -> eVC-21
- 260 1608 -> eVC-21/eVALC
- 260 1620 -> mechanical pre-filter

Special protective filter to protect the measuring cells

Various filters to protect the sensor against aggressive vapours, alcohols, glycols, etc.

For detailed information on the most suitable filter for your application, please consult the Novasina filter data sheet.

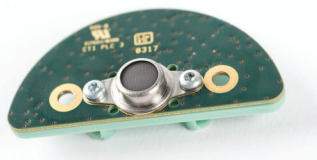


260 1609 aw-Sens-ENS

aw-Sens-ENS

Interchangeable intelligent and factory-calibrated measuring cell system based on Novasina „Novalyte“ technology. The active heating prevents condensation on the moisture measuring element.

Caution: Never touch the front area of the measuring cell with your hands or any other object!



260 1615 aw-Sens-ELS

aw-Sens-ELS

Interchangeable intelligent and factory-calibrated measuring cell system based on Novasina „Novalyte“ technology. The active heating prevents condensation on the moisture measuring element. This special sensor won't be affected by alcohol-(ethanol).

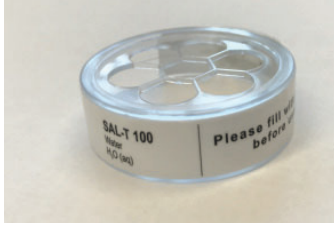
Caution: Never touch the front area of the measuring cell with your hands or any other object!



260 1617 Service Tool

Service Tool

Tool for easy filter replacement and removal of the sample insert for sorption isotherms.



260 1619 SAL-T 100 standard

SAL-T 100 %

Empty SAL-T standard with RFID tag for adjustment and calibration at 100 % rH with pure water



260 1621 SI-Set

SI set

Set for the recording of an adsorption and desorption isotherm with the LabMaster-aw neo.



260 1584 ePW Dispenser

ePW Dispenser

5 dispensers with 20 pcs. each Disposable sample trays and a holder for the dispensers